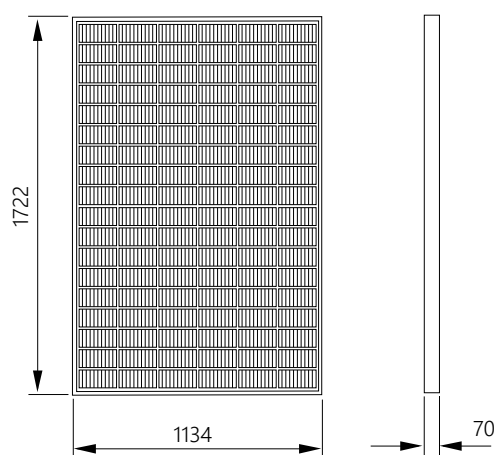


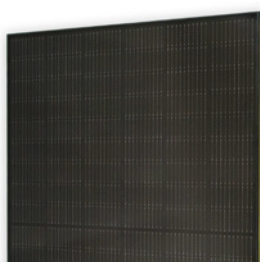
## M10 Solar Photovoltaic Panels



- Simple roof integration with clean, low-profile aesthetic for new build and retrofit
- Rapid installation times of less than 45 min/kWp easily achieved
- Compatible with the widest range of slate and tile including special fixings for different batten thickness
- Fitted during the normal roofing programme, enabling clarity of responsibility and safe working practices
- Achieves highest fire rating and wind resistance without modifications to the roof



PV16-405-M10



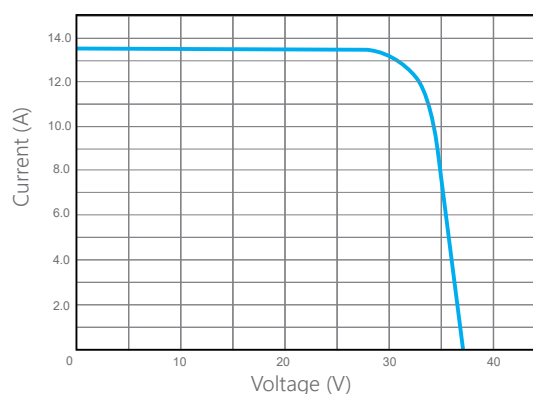
### Mechanical Specification

Model	PV16-xxx-M10	
Aperture Area	m <sup>2</sup>	1.885
Width	mm	1,134
Length	mm	1,722
Thickness	mm	70
Weight	kg	25.0
Static roof loading (distributed)	kg / m <sup>2</sup>	12.8
Characteristic Wind Resistance	kPa	4.65
Ultimate Design Load <sup>1</sup>	kPa	4.65
Positive Design Load	IEC 61215	5.40
Roofing System Fire Rating	EN 13501-5	B <sub>ROOF</sub> (T1, T2, T3, T4)
Power Warranty	% rated	90% 10 years, 80% 25 years
Product Warranty		15 years
Standards		IEC61215, 61730, TUV, MCS05, MCS12, BBA
Structural Durability		Equivalent to roof structure

### Electrical Specification

Model	Clearline fusion PV16-XXX-M10	
Peak Power <sup>2</sup>	Wp	405
Module Efficiency <sup>3</sup>	%	21.5
Number of Cells		54x2
Maximum Power Voltage (V <sub>mpp</sub> )	V	31.02
Maximum Power Current (I <sub>mpp</sub> )	A	13.06
Open Circuit Voltage (V <sub>oc</sub> )	V	37.05
Short Circuit Current (I <sub>sc</sub> )	A	13.62
NOCT <sup>4</sup>	°C	45.0
Cell Type		Monocrystalline Silicon
Power Temperature Coefficient	% / °C	-0.35
Current Temperature Coefficient	% / °C	0.05
Voltage Temperature Coefficient	% / °C	-0.28
Maximum System Voltage	VDC	1,000
Maximum Fuse Rating	A	25
Safety Classification		Class 2
Electrical Connectors		Genuine Stäubli MC4 PV-KST4, PV-KBT4

### I-V Curve



<sup>1</sup> Design resistance to ultimate loads includes a partial material safety factor of 1.0

<sup>2</sup> Subject to a manufacturing tolerance of +/- 3 %.

<sup>3</sup> Based on aperture area.

<sup>4</sup> Nominal Operating Cell Temperature

Electrical specification measured under standard test conditions: Irradiation 1 kW/m<sup>2</sup> with light spectrum AM 1.5 and a cell temperature of 25°C.

## M10 Solar Photovoltaic Panels

### Pitched Roof Integration

Sleek, low-profile integrated solar that replaces the roof covering for an improved aesthetic and for simple roof maintenance, now at similar cost to above-roof panels. Simple, beautiful, durable.

Solar never looked so good.

